

Datasheet

TUYGUN

Street Lighting Luminaire
50-200W

LED



EN 60598-1

EN 60598-2-3



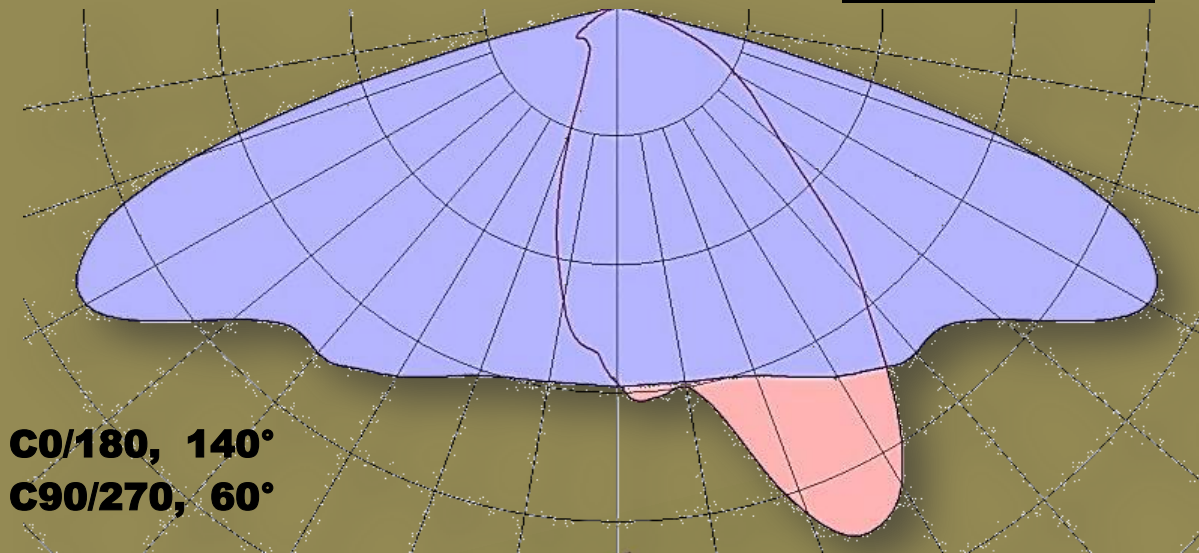
Specifications

Total System Power	50-200 W \pm %5
Input Voltage & Frequency	100-270 VAC / 50-60 Hz
Power Factor	0,95
Equivalent to	250W Mercury & Sodium Discharge Luminaire
Luminaire Body	Aluminium Injection Monoblock
Painting	200 °C Polyester Baked
Body Colour	RAL 7035
Fixing Elements	Inox
Mechanical Endurance	IK 08
Environmental Protection Class	IP 66
Efficiency	115 lm/W
Illuminance Class	M1&M2
Light Source	Power LED & 36 pcs
CCT	3000-6500 °K
CRI	70%
LED Life Time	50000 hrs @ L70
Light Control	Optional (DALI, 0-10VDC)
FWHM	Asymmetrical Beam 140° X 60°
Secondary Optics	Optical Grade PC LENS
Enclosure	4 mm Tempered Glass
Driver	SELV, Thermal Circuit Breaker, Over Voltage, Over Current, Short Circuit
Operating Temperature	-20 °C / +40 °C
Net Weight	8 kg
Warranty	3 Years
Standard	EN 60598-2-3 & EN 60598-3

Optical Features

Tuygun LED Luminaires have a long life and deliver a remarkable efficacy, allowing for lower maintenance and operating costs.

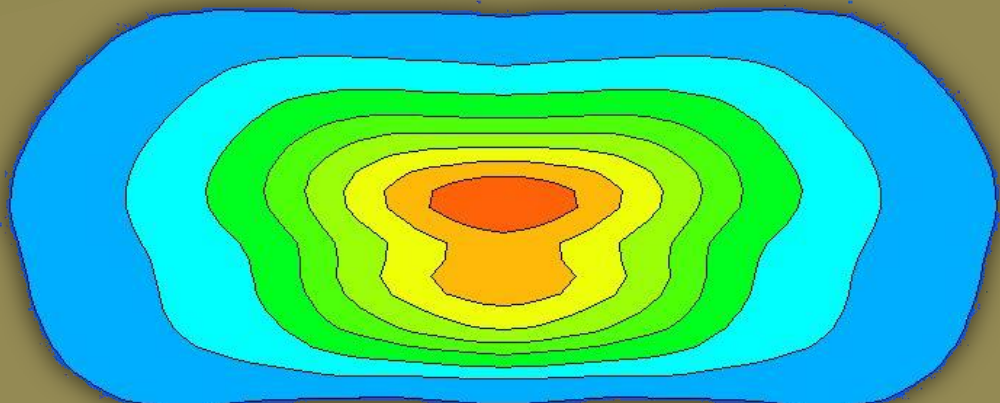
light intensity graph



ROAD OPTICS

3D Light
Intensity
Distribution

lux map



Street optic with anti glare lens technology

Application Areas

Tuygun designed to deliver efficient light for road & street area applications.



Dimensional Features

16 Nm / AKB 13

40 - 60 mm
Pole Fixing Diameter

POWER[W]

HEIGHT [m]

50W

4 - 6

100W

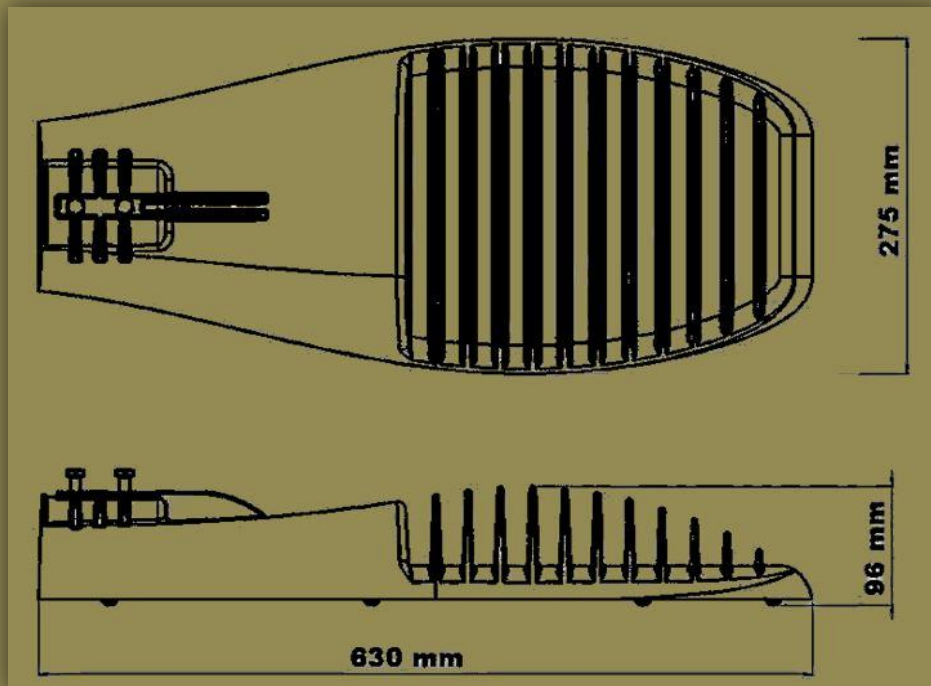
6 - 8

150W

8 - 10

200W

10 - 12



h

$$l = 4.h$$

$$L = h$$

